

BLACK INTRAOCULAR LENS:

ANOTHER COSMETIC APPROACH TO LEUKOCORIA

Pedrosa C, Pina S, Azevedo A, Pêgo P, Feijóo B, Prieto I

Ophthalmology Department
Prof. Doutor Fernando Fonseca Hospital, EPE
Lisboa, Portugal
The authors have no financial interests

BLACK INTRAOCULAR LENS: ANOTHER COSMETIC APPROACH TO LEUKOCORIA

CASE REPORT

- **32-year-old woman;**
- Undesired cosmetic appearance of her **amblyopic left eye** due to:
 - Traumatic cataract and total retinal detachment during childhood
- **Visual acuity:**
 - OE: no light perception
- **External examination:**
 - OE: leukocoria and exotropia

BLACK INTRAOCULAR LENS: ANOTHER COSMETIC APPROACH TO LEUKOCORIA

CASE REPORT

- **Biomicroscopy:**

- OD: normal
- OE:
 - Clear cornea
 - Normal iris
 - White pupillary reflex
 - Subluxated white cataract

- **A-scan Ultrasonography:**

- Fibrotic retinal detachment



BLACK INTRAOCULAR LENS: ANOTHER COSMETIC APPROACH TO LEUKOCORIA

CASE REPORT

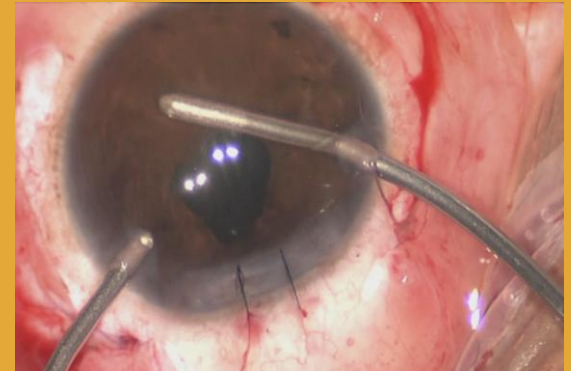
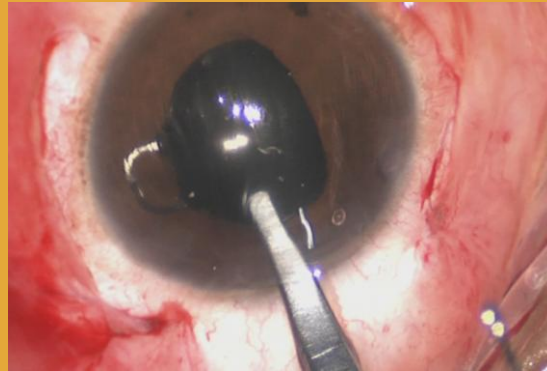
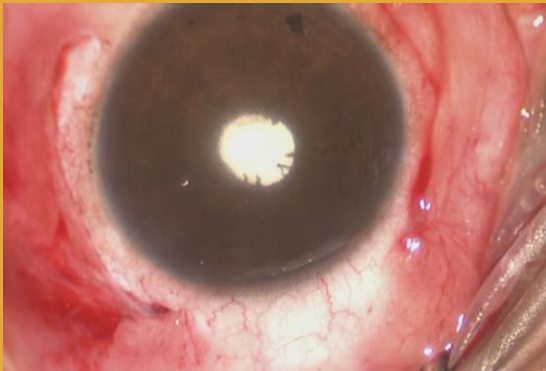
Discussion of all the therapeutic options
Informed consent



**COSMETIC SURGERY:
STRABISMUS + LEUKOCORIA
CORRECTION**

BLACK INTRAOCULAR LENS: ANOTHER COSMETIC APPROACH TO LEUKOCORIA

CASE REPORT



- ✓ Recession of lateral rectus muscle and resection of medial rectus muscle
- ✓ Retropupillary implantation of an Artisan pupil occluder without cataract extraction



- Artisan Pupil Occluder
- Black
- Flexible Iris Claw
- Overall diameter: 8.5 cm
- Optic Diameter: 5.4 mm

BLACK INTRAOCULAR LENS: ANOTHER COSMETIC APPROACH TO LEUKOCORIA

CASE REPORT

Immediate postoperative course:

- Uneventful



Two weeks later:

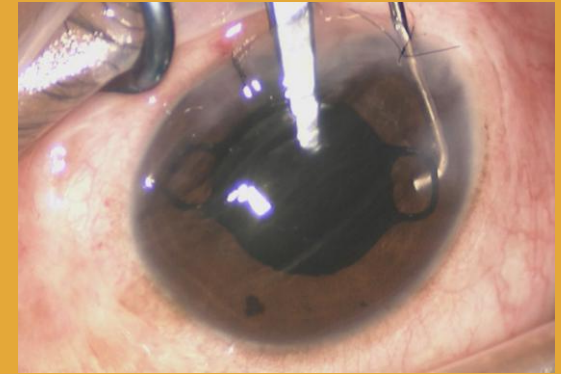
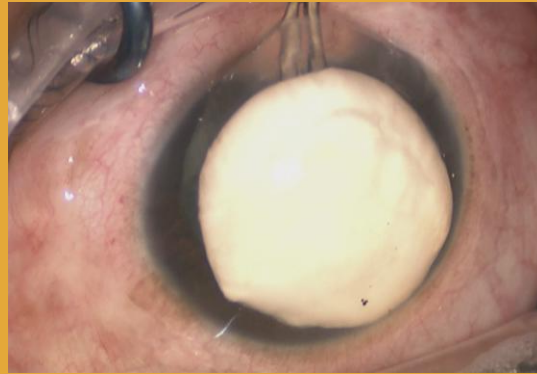
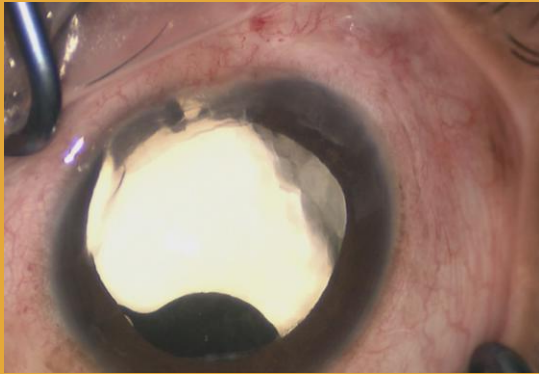
- Dislocation of one of the lens haptics and posterior subluxation
- Increase of the cataract subluxation



RE-INTERVENTION

BLACK INTRAOCULAR LENS: ANOTHER COSMETIC APPROACH TO LEUKOCORIA

CASE REPORT



- Pupil occludor extraction
- Intracapsular cataract extraction
- Reposition of pupil occludor over the iris

BLACK INTRAOCULAR LENS: ANOTHER COSMETIC APPROACH TO LEUKOCORIA

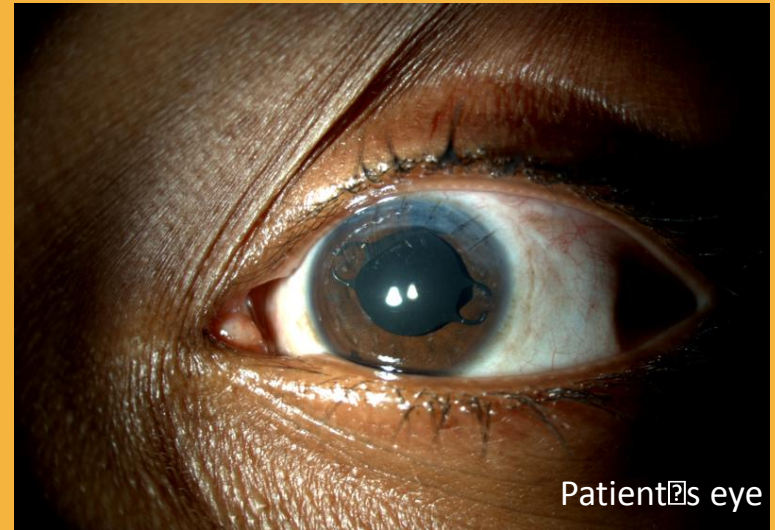
RESULTS

Immediate postoperative course:

- Uneventful

Six months later:

- Without complications
- Exotropia was corrected
- Pupil occluder remained well centered
- Significant improvement in the patient's self-image



Patient's eye

BLACK INTRAOCULAR LENS: ANOTHER COSMETIC APPROACH TO LEUKOCORIA

DISCUSSION

CLASSIC APPROACH TO LEUKOCORIA:

1. Cosmetic contact lenses:

- Uncomfortable or cosmetically unaccepted



2. Corneal Tattooing:

- May cause toxic effects, corneal ulceration, mild keratitis or iridocyclitis
- Residual white reflex

3. Simple crystalline lens extraction:

- Fibrotic retinal detachment may cause residual white reflex

4. Implantation of a standard Black Intra Ocular Lens:

- Implicates capsular bag preservation or scleral sutures

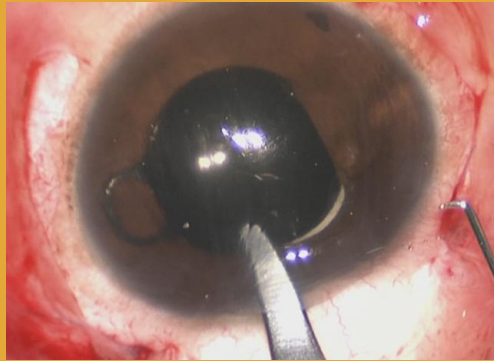


BLACK INTRAOCULAR LENS: ANOTHER COSMETIC APPROACH TO LEUKOCORIA

DISCUSSION

OUR APPROACH TO LEUKOCORIA:

1) Retropupillary implantation of an Artisan Pupil Occluder without cataract extraction



- ✓ Pupil occlusion in cases of intractable diplopia
- ✓ Phakic and aphakic eyes (due to the vaulted configuration)

BLACK INTRAOCULAR LENS: ANOTHER COSMETIC APPROACH TO LEUKOCORIA

DISCUSSION

OUR APPROACH TO LEUKOCORIA:

1) Retropupillary implantation of an Artisan Pupil Occluder without cataract extraction



COMPLICATION

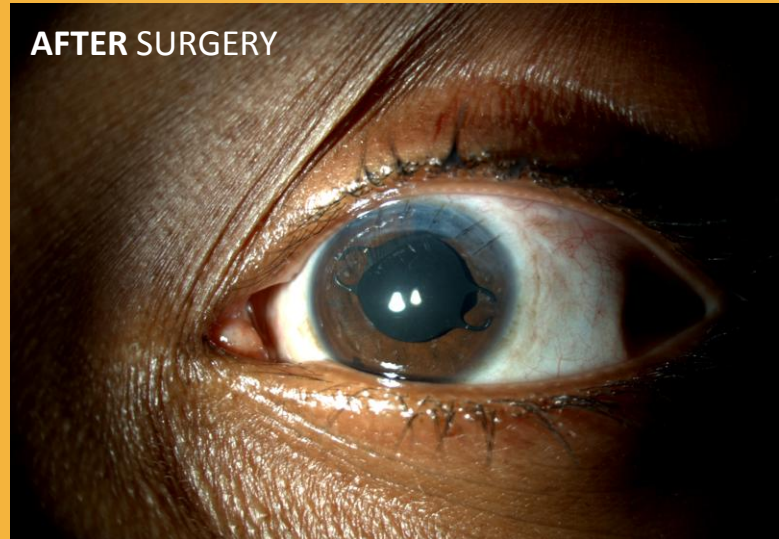
2) Intracapsular cataract extraction and reposition of Pupil Occluder over the iris

✓ In our experience: due to the features of this type of lens it's not very suitable to the retropupillar enclavation

BLACK INTRAOCULAR LENS: ANOTHER COSMETIC APPROACH TO LEUKOCORIA

CONCLUSION

- ✓ Despite the need of re-intervention, the final cosmetic appearance was excellent. So, in our experience:
- ✓ In cases of **leukocoria** the use of the **Artisan lens** as a pupil occluder, over the iris, can be a **cosmetic correction alternative** to the classic treatment.





BLACK INTRAOCULAR LENS: ANOTHER COSMETIC APPROACH TO LEUKOCORIA

REFERENCES:

1. Alio J. et al. Corneal Tattooing (keratopigmentation) with new mineral micronised pigments to restore cosmetic appearance in severely impaired eyes.
2. Panda A. et al. Corneal tattooing. Br J Ophthalmol. 2002 December; 86(12): 1461.
3. Anastas CN et al Corneal tattooing revisited: excimer laser in the treatment of unsightly leucomata. Aust N Z J Ophthalmol. 1995 Aug;23(3):227-30.
4. Kim JH, Lee D, Hahn TW, Choi SK. New surgical strategy for corneal tattooing using a femtosecond laser. Cornea. 2009 Jan;28(1):80-4.
5. Osher RH, Snyder ME. Phakic implantation of a black intraocular lens in a blind eye with leukocoria. J Cataract Refract Surg. 2003 Apr;29(4):839-41.
6. Choyce DP. Black intraocular lens for leukocoria. J Cataract Refract Surg. 2001 Feb;27(2):179-80.
7. White ST, McGinnity G. Black intraocular lens for leukocoria. J Cataract Refract Surg. 2000 Aug;26(8):1256-7.

THANK YOU FOR YOUR ATTENTION