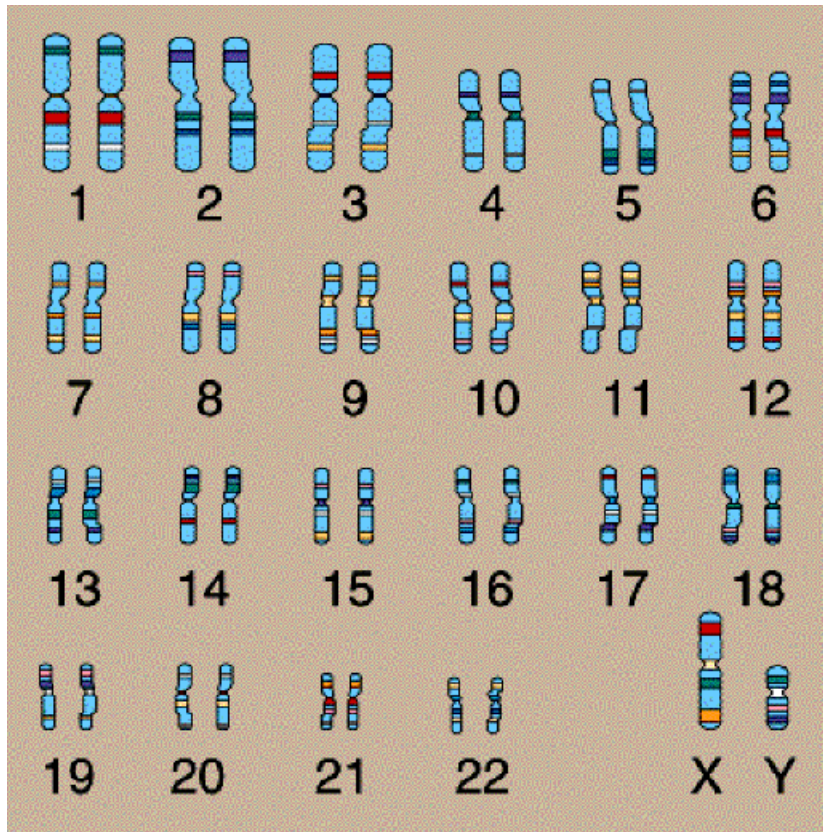


SESSÃO CLÍNICA

Citogenética Molecular

Aplicação em Anatomia Patológica



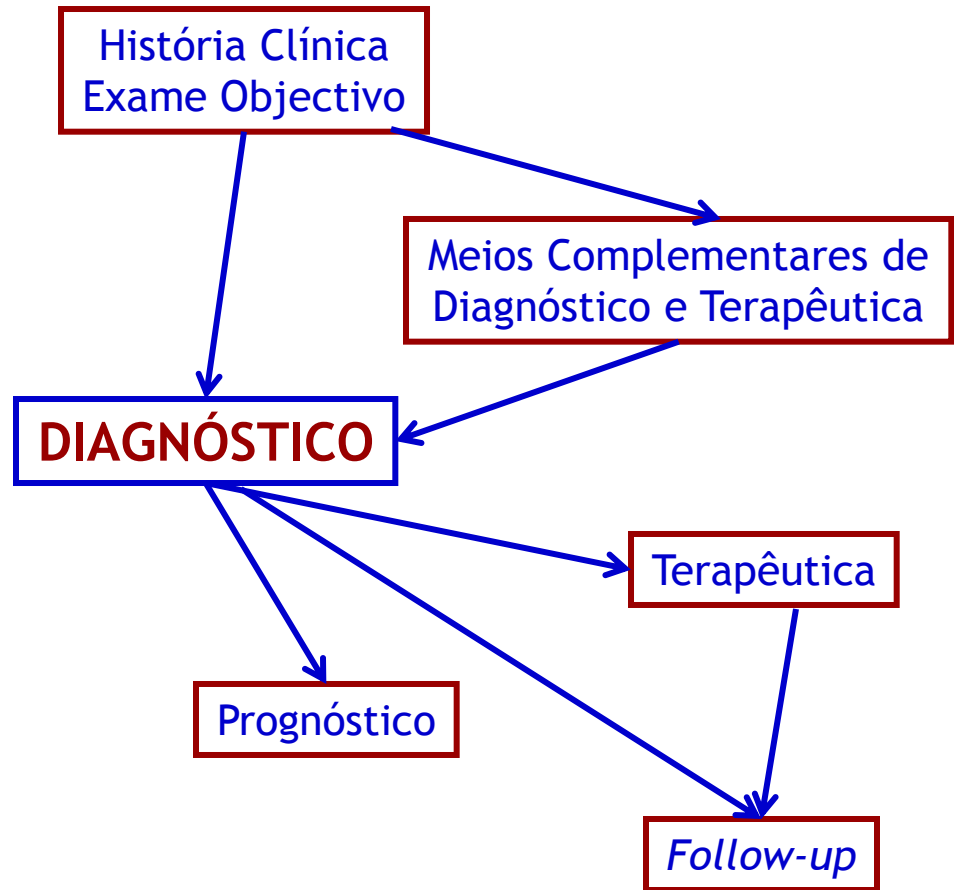
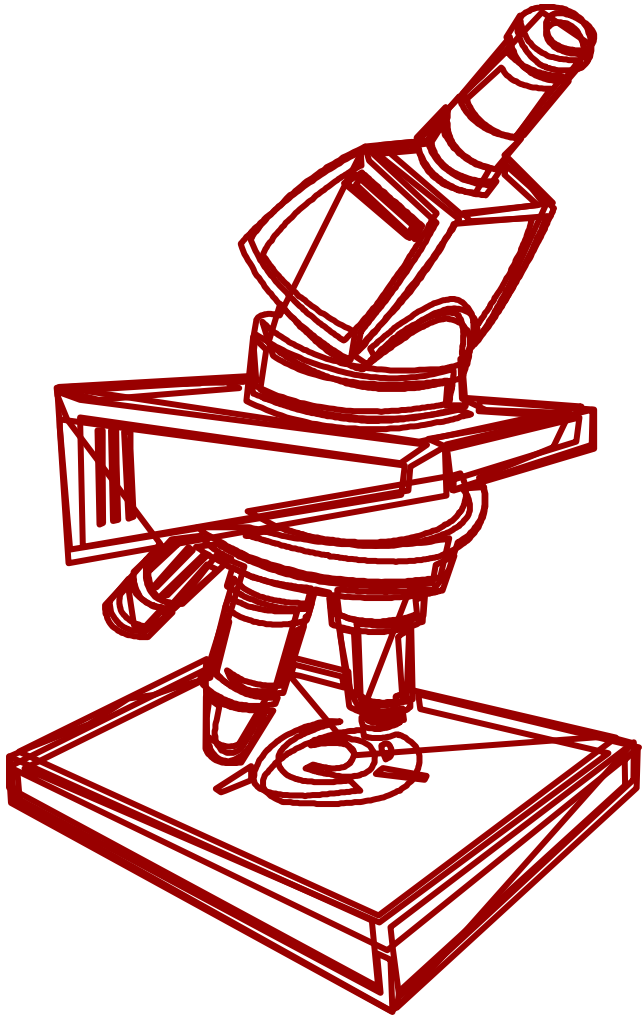
Cariótipo Humano

Sofia Loureiro dos Santos
Serviço de Anatomia Patológica

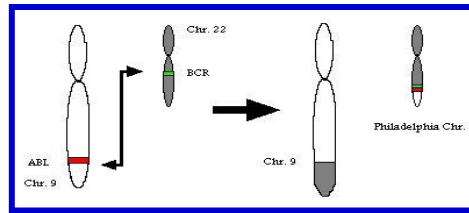
Bruno D'Almeida
IZASA

HFF, 13 de Janeiro/2011

Anatomia Patológica

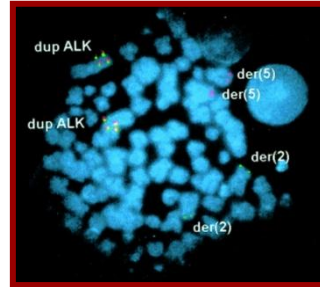


Diagnóstico



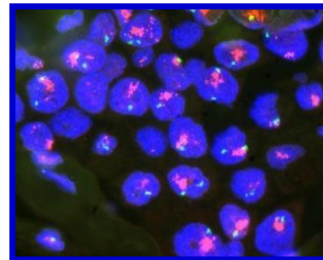
t(9;22)
Cromossoma Philadelphia - LMC

Prognóstico



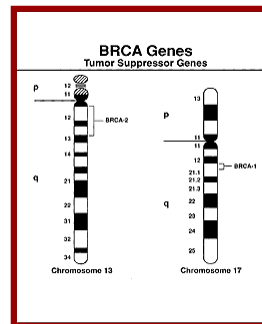
**(A)naplastic (L)ymphoma (K)inase
ALK - t(2;5)(p23;q35)**

Terapêutica



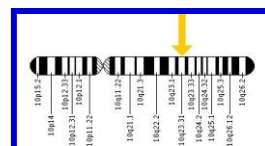
HER2
17q12-21
Terapêutica com Trastuzumab

Risco Familiar



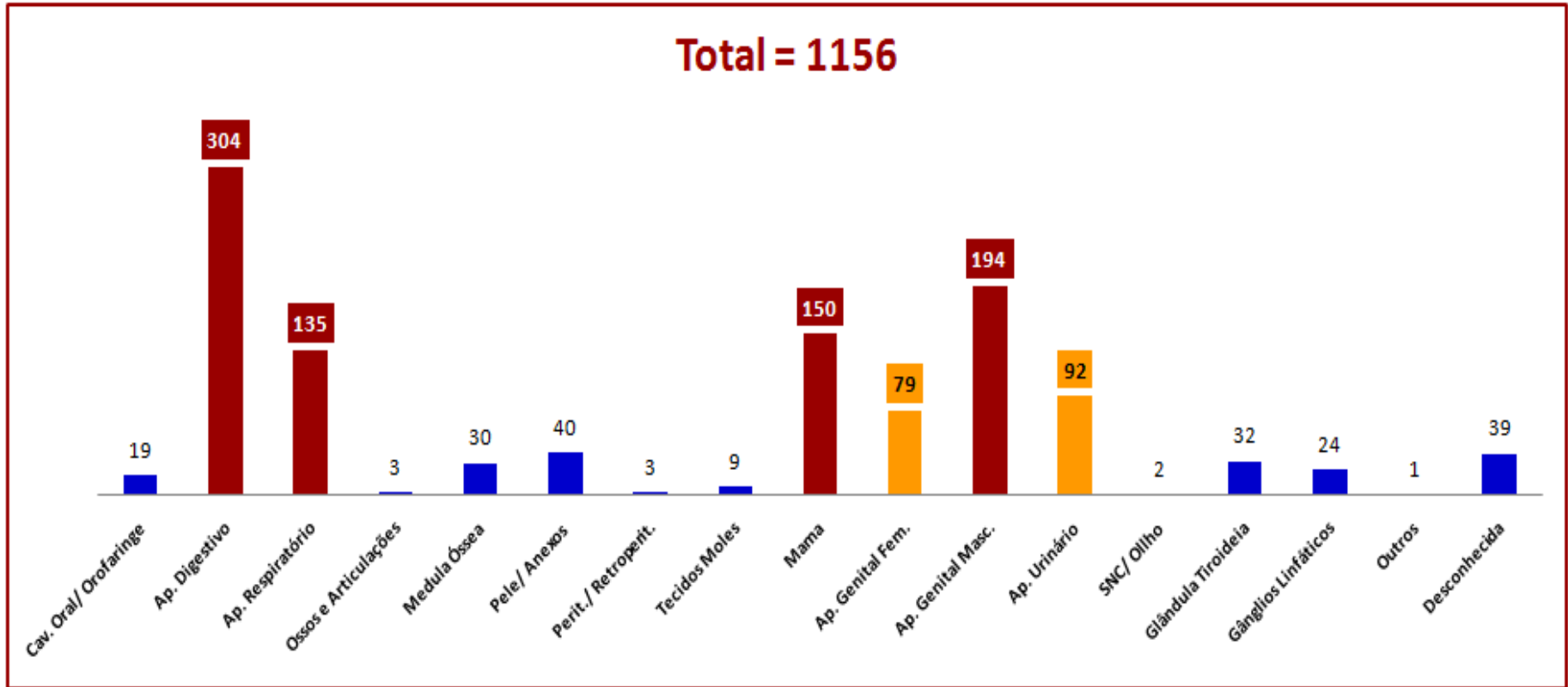
BRCA1 - gene supressor (cromossoma 17)
BRCA2 - gene supressor - (cromossoma 13)
Células germinativas - risco familiar

Monitorização Terapêutica



PTEN - gene supressor (cromossoma 10)
Perda de PTEN - resistência ao Trastuzumab

Novos casos Neoplasias 2009



ROR - Sul

<http://www.ror-sul.org.pt/Pages/Home.aspx>